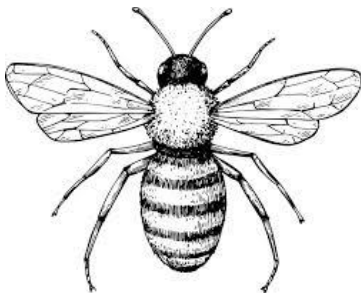


BEHOLD THE BEES OF MADLEY

On Friday 21st June, Madley Primary School, who have an established Forest School, received a strong, large queen bee including her colony. At the Community Garden, which is where the hard- working colony will stay, the children have been preparing a welcoming space for the bees. It is ready with 2 hives and space to add 3 more.

Two staff members, who have a passion for bees, joined the Wye Valley Association and did their beekeeper training. After weeks of hard work, Mrs Lee and Mrs Marlow have made a big deal for the swarm. This was a dream from the school for many long months. The school now have many opportunities for the school where they can learn about bees and get very close to them!



The bees should settle in a few weeks!

Community Garden

The community garden, which is called Comet's Meadow, is where the special bees will stay. Hopefully, the bees will settle in a few weeks. Hopefully, the school will be able to make their own honey. The Year 5 children, who have been heavily involved, are hoping that when they are in Year Six they will be able to produce some honey.



Hopefully another swarm will come soon to the other hive. The type of bees they want are honey bees, worker bees and the queen bee at their community garden.

Reported by Vinnie

Year 5 Madley Primary School